

# Ode to Joy

L.v. Beethoven

Allegro assai  $\text{♩}=140$

Flute

Oboe

Clarinet in B $\flat$

Bassoon *pp*

Trumpet in B $\flat$

Trombone

Acoustic Guitar

Violin 1

Violin 2

Violoncello *pp*

Contrabass *pp*

This system contains the first 11 measures of the score. The woodwinds (Flute, Oboe, Clarinet in B $\flat$ , Bassoon) and brass (Trumpet in B $\flat$ , Trombone) are mostly silent, indicated by rests. The Bassoon and Contrabass parts begin with a piano (*pp*) accompaniment. The strings (Violin 1, Violin 2, Violoncello, Contrabass) also begin with a piano (*pp*) accompaniment. The Acoustic Guitar part is silent.



12

Fl.

Ob.

Cl.

Bsn. *p*

Tpt.

Tbn.

A. Gtr.

Vln. 1

Vln. 2

Vc. *p*

Cb. *p*

This system contains measures 12 through 22. The woodwinds (Flute, Oboe, Clarinet) and brass (Trumpet, Trombone) remain silent. The Bassoon part continues with a piano (*p*) accompaniment. The strings (Violin 1, Violin 2, Violoncello, Contrabass) continue with a piano (*p*) accompaniment. The Acoustic Guitar part remains silent.



44

Fl. *p*

Ob. *p*

Cl. *p*

Bsn. *p*

Tpt.

Tbn.

A. Gtr.

Vln. 1 *p*

Vln. 2 *p*

Vc. *p*

Cb. *p*

Detailed description: This system of musical notation covers measures 44 to 53. The key signature is one sharp (F#) and the time signature is 4/4. The Flute, Oboe, Clarinet, and Bassoon parts begin in measure 44 with a piano (*p*) dynamic. The Violin 1 and 2 parts, Viola, and Cello parts also begin in measure 44 with a piano (*p*) dynamic. The Trumpet and Trombone parts are silent throughout this system. The music features a variety of note values including eighth and sixteenth notes, often beamed together, and some longer note values with ties.



54

Fl. *p*

Ob. *p*

Cl. *p*

Bsn. *mf* *p*

Tpt.

Tbn.

A. Gtr.

Vln. 1 *p*

Vln. 2 *p*

Vc. *p*

Cb. *mf* *p*

Detailed description: This system of musical notation covers measures 54 to 63. The key signature remains one sharp (F#) and the time signature is 4/4. The Flute, Oboe, Clarinet, and Bassoon parts continue from the previous system. The Bassoon part has a mezzo-forte (*mf*) dynamic in measure 54, which then changes to piano (*p*) in measure 55. The Violin 1 and 2 parts, Viola, and Cello parts continue with a piano (*p*) dynamic. The Trumpet and Trombone parts remain silent. The music continues with complex rhythmic patterns and melodic lines.



81

Fl.  
Ob.  
Cl.  
Bsn.  
Tpt.  
Tbn.  
A. Gtr.  
Vln. 1  
Vln. 2  
Vc.  
Cb.

This block contains the musical score for measures 81 through 88. The score is arranged in a standard orchestral format with ten staves. The instruments are: Flute (Fl.), Oboe (Ob.), Clarinet (Cl.), Bassoon (Bsn.), Trumpet (Tpt.), Trombone (Tbn.), Acoustic Guitar (A. Gtr.), Violin 1 (Vln. 1), Violin 2 (Vln. 2), Viola (Vc.), and Cello (Cb.). The key signature is one sharp (F#) and the time signature is 4/4. The music features complex rhythmic patterns with many beamed notes and rests. The Acoustic Guitar part is silent throughout this section.



89

Fl.  
Ob.  
Cl.  
Bsn.  
Tpt.  
Tbn.  
A. Gtr.  
Vln. 1  
Vln. 2  
Vc.  
Cb.

This block contains the musical score for measures 89 through 96. The instrumentation and key signature remain the same as in the previous block. The music continues with similar complex rhythmic patterns. A *rall.* (rallentando) marking is present above the Flute staff in measure 95, indicating a gradual deceleration of the tempo. The Acoustic Guitar part remains silent.

# Ode to Joy

Flute

L.v. Beethoven

Allegro assai ♩=140

48

*p*

53

59

*p*

65

*cresc.*

71

*f*

77

83

89

*rall.*

93

# Ode to Joy

Oboe

L.v. Beethoven

Allegro assai ♩=140

48



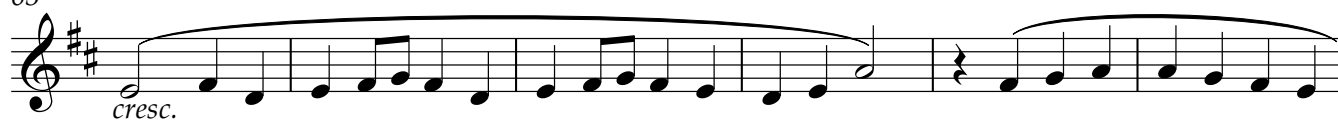
53



59



65



71



77



83



89



93

rall.



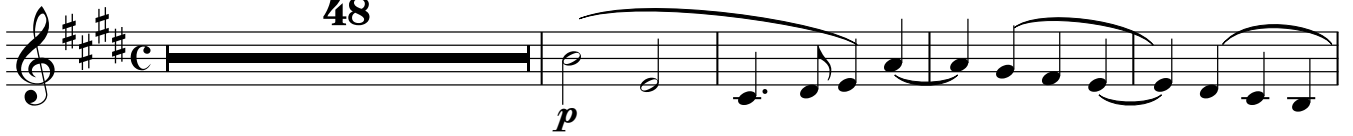
# Ode to Joy

Clarinet in B $\flat$

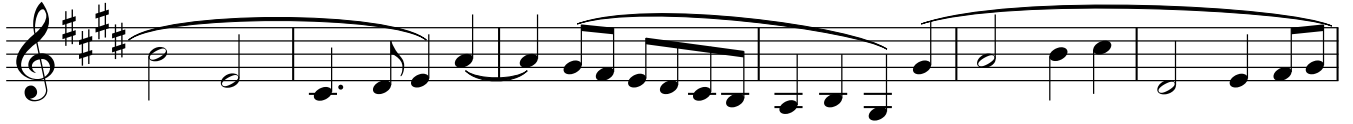
L.v. Beethoven

Allegro assai  $\text{♩} = 140$

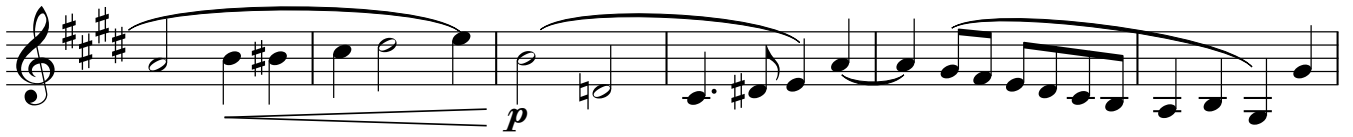
48



53



59



65



71



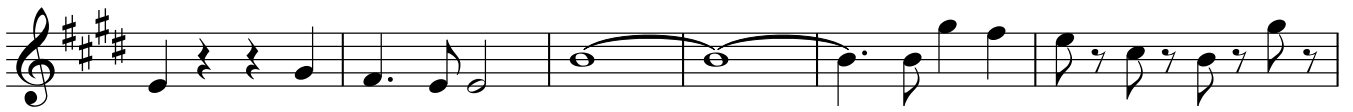
76



82



87



93

rall. . . . .





# Ode to Joy

Bassoon

L.v. Beethoven

Allegro assai  $\text{♩} = 140$

9

17

25

32

40

48

56

65

73

80

86

92

rall. . . . .

# Ode to Joy

Trumpet in B $\flat$

L.v. Beethoven

Allegro assai  $\text{♩}=140$

72



76



81



86



91



94

rall. . . . .



# Ode to Joy

Trombone

L.v. Beethoven

Allegro assai ♩=140

72



*f*

76



81



86



91



94

rall. . . . .

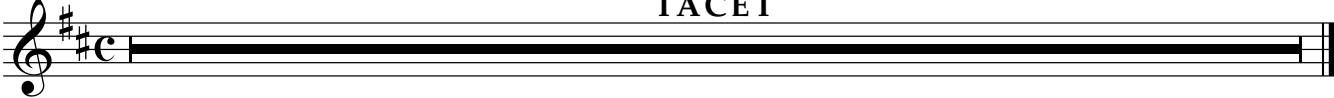


# Ode to Joy

Acoustic Guitar

L.v. Beethoven

rall. . . Allegro assai ♩=140 . . . . . TACET . . . . .



The image shows a musical staff with a treble clef, a key signature of one sharp (F#), and a common time signature (C). The staff is mostly obscured by a thick black bar, which is labeled 'TACET' in the center. Above the staff, there are tempo markings: 'rall.' followed by a dotted line, 'Allegro assai' with a quarter note and '=140', another dotted line, and 'TACET' in the center. The staff ends with a double bar line.

# Ode to Joy

Violin 1

L.v. Beethoven

Allegro assai ♩=140

47

*p*

52

57

*p*

62

67

72

78

84

90

93

rall.

Detailed description: This image shows a page of a musical score for Violin 1, measures 47 through 93. The music is in G major (one sharp) and common time (C). The tempo is marked 'Allegro assai' with a quarter note equal to 140 beats per minute. The score consists of ten staves of music. Measure 47 begins with a whole rest, followed by a series of eighth and quarter notes. A dynamic marking of *p* (piano) is placed below the first note of measure 48. Measures 52-57 continue with a melodic line of eighth and quarter notes. A dynamic marking of *p* is placed below measures 57-62. Measures 62-67 show a continuation of the melodic line with some slurs. Measures 72-78 feature a change in rhythm with dotted notes and slurs. Measures 78-84 continue with slurs and dotted notes. Measures 84-90 show a continuation of the melodic line. Measure 93 ends with a double bar line. A 'rall.' (rallentando) marking is placed above the final measure, with a dashed line extending to the right.

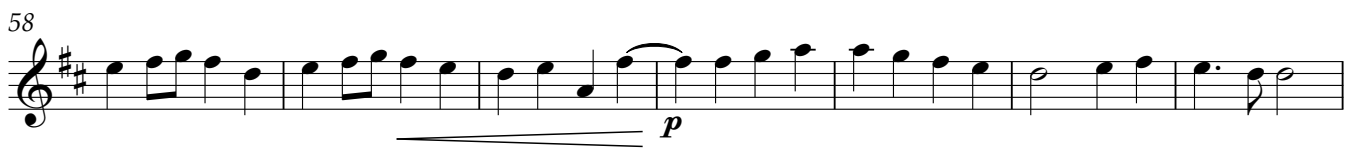
# Ode to Joy

Violin 2

L.v. Beethoven

Allegro assai ♩=140

24

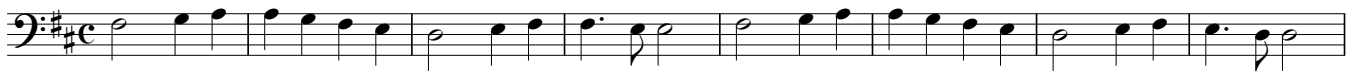


# Ode to Joy

Violoncello

L.v. Beethoven

Allegro assai  $\text{♩} = 140$   
*pp*



# Ode to Joy

Contrabass

L.v. Beethoven

Allegro assai ♩=140

*pp*

